



WELCOME TO INTEGRE TRANS

2023

20% less
CO₂

LNG
powered

Integre
Trans

ISUZU



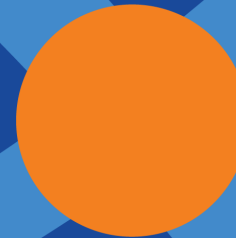
BUSINESS PHILOSOPHY

"By providing quality transport and logistics services, we will strive to consistently move towards a leading position in terms of customer choice in Europe. We hope that the exceptional attention paid to each customer's cargo will help us to do just that. "

-Žana Kel, CEO



Anywhere for you



Vision

Leading logistics company in Europe
by customers' choice.



Mission

Providing high-quality services to
clients as if it was our own business.



Values

Quality
Professionalism
Responsibility

INTEGRE TRANS - AT A GLANCE

We are an international transport and logistics services company. Our head office is located in Lithuania, and we have branches in France, Germany, and Poland.



2,200

Trucks (in 2023)



3,000

Trailers (in 2023)



6,500 sq. m

Warehouse in France, Épône



830

Clients



95%

Client Satisfaction index (in 2021)



135,000

Shipments

**Integre
Trans**

ABOUT THE TEAM

Our essential assets and guarantee of success are our employees, therefore, we invest into improvement of the employee competences and continuous training of drivers at the drivers' academy, ensuring safe and healthy workplaces.



330

Office employees



3,200

Drivers



13,000

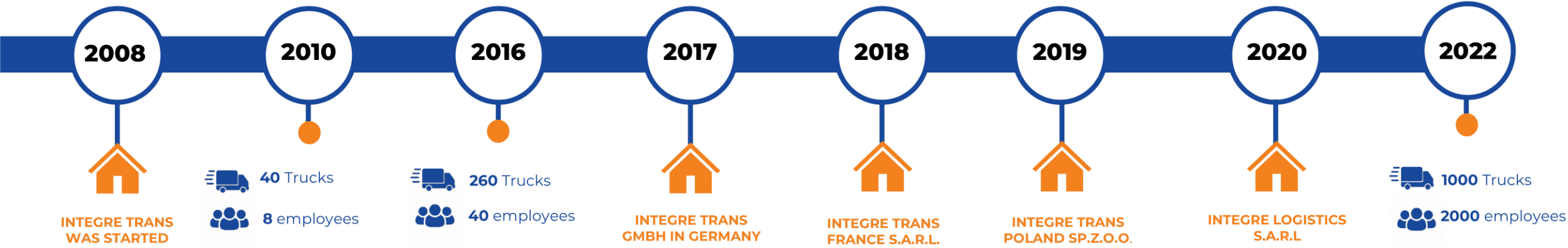
Employee training



84%

Employee satisfaction rate

TIMELINE



INDUSTRY CERTIFICATIONS



MEMBERSHIP IN ORGANISATIONS



TMS SYSTEM

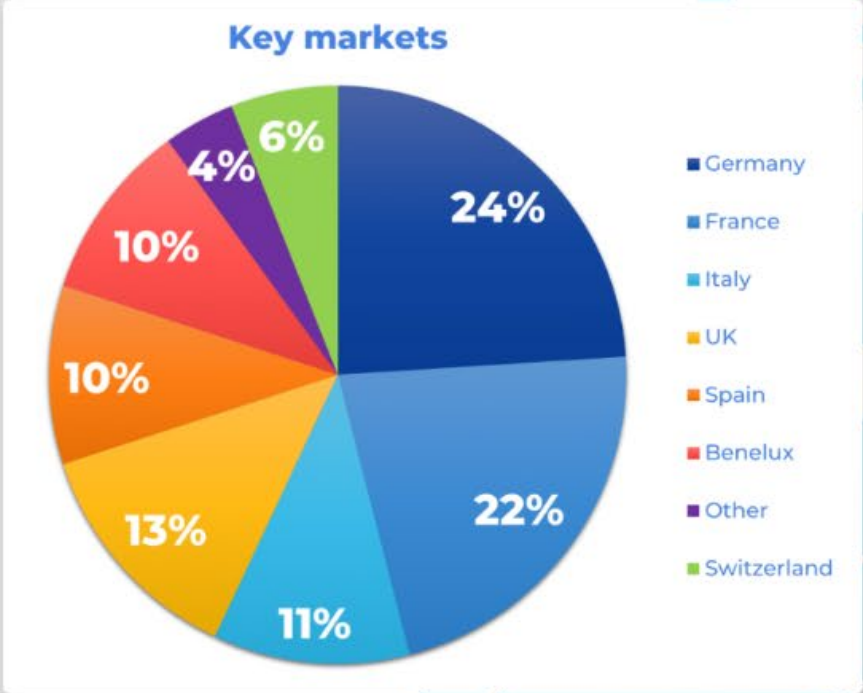


NETWORK

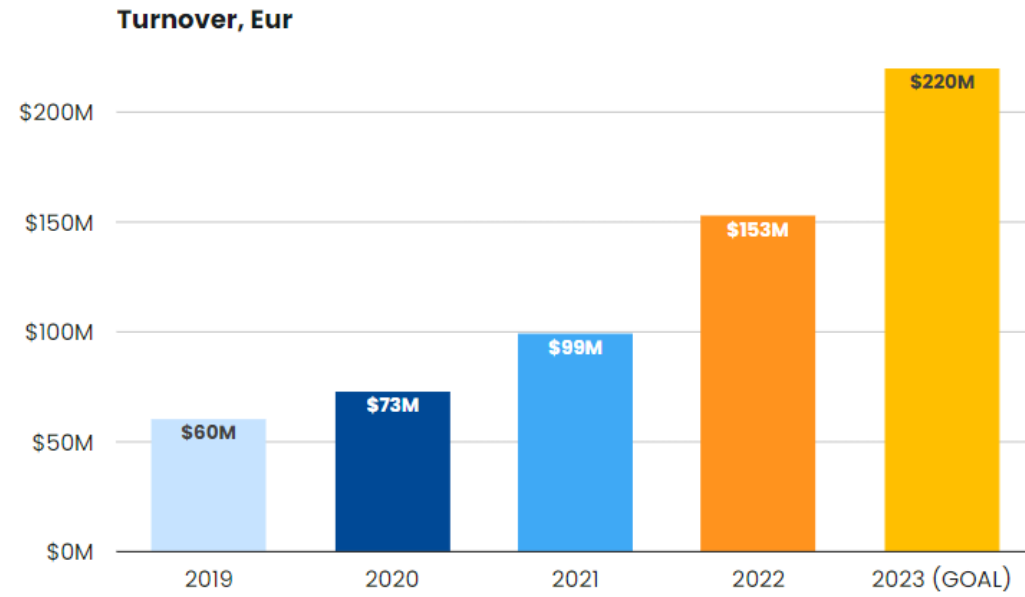
Integre Trans operates across Western Europe, UK and Scandinavia.

Key subsidiaries:

- Integre Trans GmbH
- Integre Trans S.A.R.L
- Integre Logistics S.A.R.L
- Integre Trans Poland Sp.z.o.o



FINANCIAL INDICATORS



OUR FLEET

Our vehicle fleet in few upcoming years will consists of 2200 own trucks and 3000 trailers that meet the highest standards and are equipped with cutting-edge technology. As a sustainable business, we only invest in new 'Euro 6' trucks, which allow us to reduce CO2 emissions. The average age of own truck fleet is 1.3 years.



STANDART

- Length Up to 13,6 meters
- Height Up to 2,70 meters
- Volume Up to 92m
- Gross weight Up to 26 tons
- Content Up to 34 europal

MEGA

- Length Up to 13,6 meters
- Height Up to 3 meters
- Volume Up to 100m
- Gross weight Up to 26 tons
- Content Up to 34 europal

Additional options



CHASSI, CONTAINER (on request)

- Full ADR
- Prepared for 20" ISO and 20" Swap tank containers with standard equipment for unloading (2x hoses 6m long, full kit of adapters for all types)
- Chassi can be arranged with a pump/meter by special request.

Delivering all types of containers:

- 40ft or 40ft (HC)
- 45ft or 45 ft (HC)
- 20 ft or 20 ft (HC)



SILo (dedicated trailer option)

- 60cbm standard silo tanker
- With electrical tipping solution
- Equipped with stainless steel butterfly valve for all types of products
- Equipped with all necessary hoses and adapters for all types of unloadings

LOGISTICS SERVICES



Road freight transport

- Transportation of partial and full loads
- Express delivery
- JIT and JIS transportation
- Container transportation
- FCL and LCL transportation



Special road freight transport

Dangerous goods:

- SQAS certificate
- ADR certification
- ADR dedicated fleet
- TAPA



Contract logistics

- Transshipment warehouse
- Distribution management
- Full pallet and unit handling
- Inventory management
- Hazardous material
- Returns management
- Value-added services
- E-commerce solutions
- A modern warehouse of 6 500 SQ. m. located in the motorway A 13, exit 10 Epône.

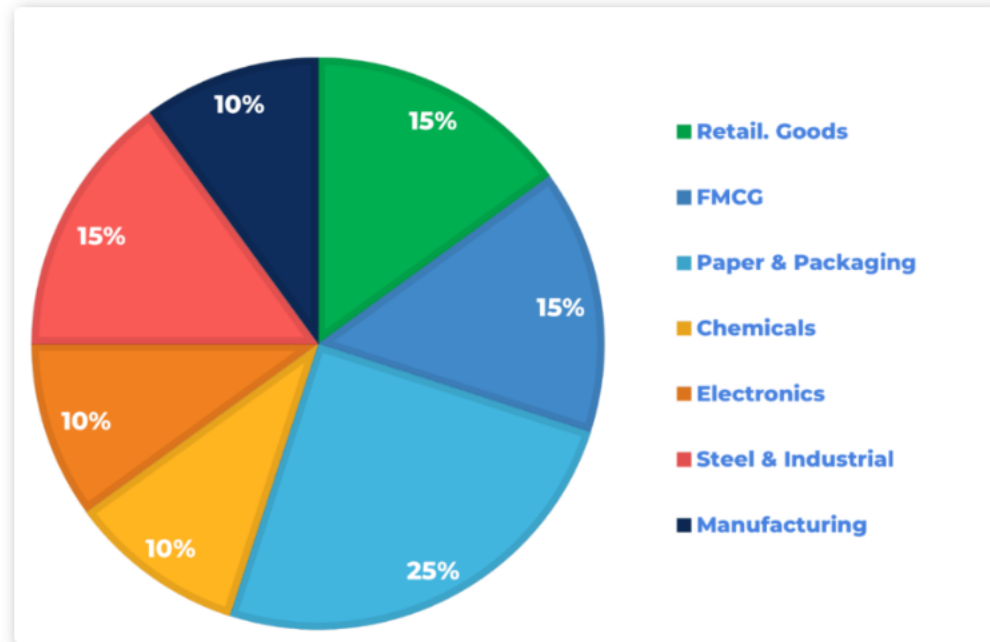


Intermodal solutions

Intermodal railway connections:

- Spain to Luxembourg
- Germany to Italy and Austria, to Scandinavia through rail and main ferry ports
- Great Britain to Italy and Spain, Netherlands.

INDUSTRY EXPERTISE



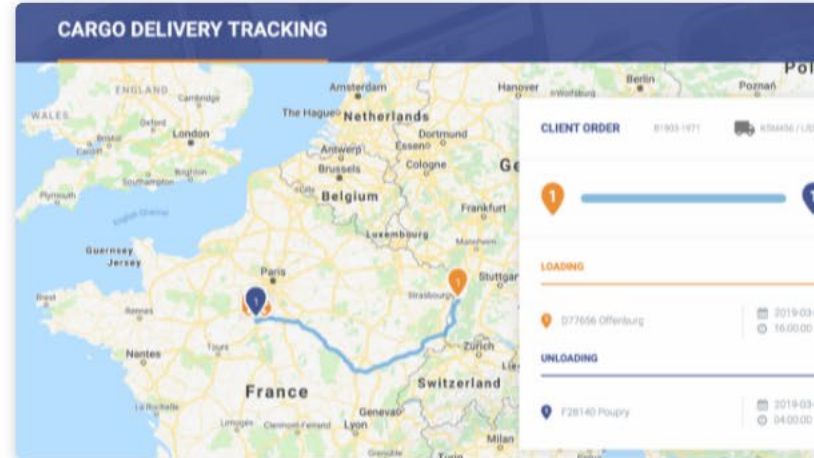
We have experience in a wide range of industries such as Steel & Industrial, Paper & Packaging, Retail, FMCG, Chemical, Electronics, Manufacturing and provide road freight transport services across Western Europe, UK and Scandinavia.

CUSTOMER CARE



Trainings and qualification improvements at our Drivers' Academy

Communication with driver by www.fleethand.com




Real-time trucks tracking link to customer

Providing our own custom-made IT solution for clients.

VALUE TO OUR CUSTOMER

Our priority is impeccable service and professional, first-class customer care. We take care of our clients' business as if it was our own, so we take responsibility together to deliver common results.

- 
- ✓ Flexibility and fast response
 - ✓ Reporting and reviews
 - ✓ Access to capacity
 - ✓ Risk management
 - ✓ Always on time
 - ✓ #Trucker Heroes
 - ✓ Anywhere for you
 - ✓ Industry Certification
 - ✓ Long-term contracts or spot shipping available
 - ✓ CO2 reporting
 - ✓ Multilingual communication
 - ✓ Visibility
 - ✓ Customer care and support

SUSTAINABLE BUSINESS MANAGEMENT

The strategy of Integre Trans group of companies is carried out in ESG directions: environmental protection, social responsibility and good governance.

We have integrated 11 UN Sustainable Development Goals (SDGs).

[Read more](#)





THANK YOU!

Head Office Lithuania

Sporto st. 18, LT-09238 Vilnius

www.integretrans.com

+370 5 203 06 47

info@integretrans.lt